



SUPPLEMENTARY INSTALLATION INSTRUCTIONS

**MODEL Secure Seal®
SS-SSD-SSID (3" to 24")**

ADJUSTABLE LENGTH INSTALLATION INSTRUCTIONS

Note: For Single Wall (SS) - follow steps 1-9

The adjustable length will be installed to fill the gap between two parts:

1. Downstream part
2. Upstream part

See Figure 1

Components / Parts required:

1. Standard component
2. Adjustable length - inner wall
3. Adjustable length - outer wall
4. Inner collar – multi-tooth clamp
5. Outer collar – draw band
6. Clip retainer
7. Silicone Lube
8. Viton caulking

See Figure 2

STEP 1:

Add silicone lube on female ends everywhere a male end with O-Ring goes in. In this case, you must add silicone lube on the female end of the adjustable inner wall only.

Note: You only require a thin film application of the silicone lube.

See Figure 3

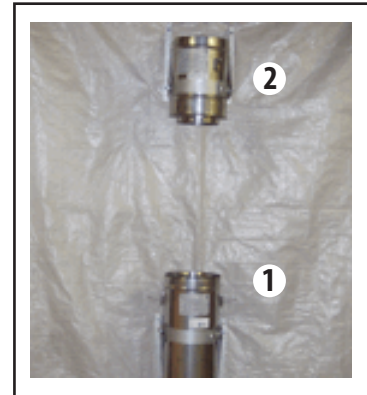


Figure 1

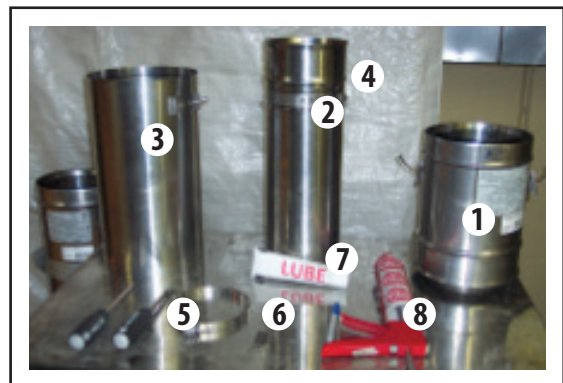


Figure 2



Figure 3

STEP 2:

Apply a 1/8" bead of viton caulking all around at the edge of the pipe.

See Figure 4

NOTE: Don't use silicone lube in this location as it would prevent proper adhesion of the viton caulking.

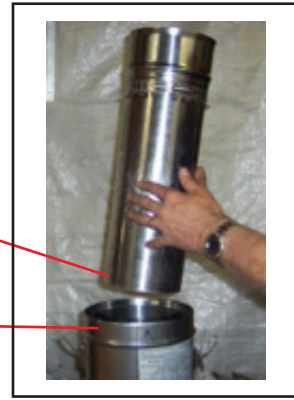


Figure 4

STEP 3:

Insert the adjustable length inner wall inside the standard part female end. Make sure you **Penetrate at least 3"** into female end. Twist it so bead of caulking is spread evenly.

See Figure 5



Figure 5

STEP 4:

Install the clip retainers on the standard part to keep the clip closed because there is no rolled edge on the adjustable for the clip to grab on. This will prevent the hook of the clip from hanging down. Be sure to install the retainer the correct way.

See Figure 6

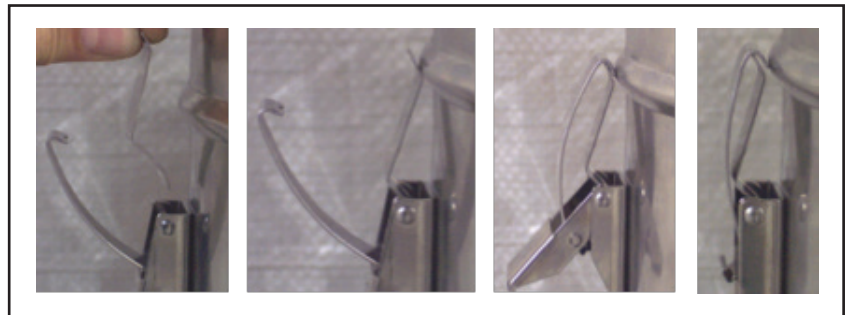
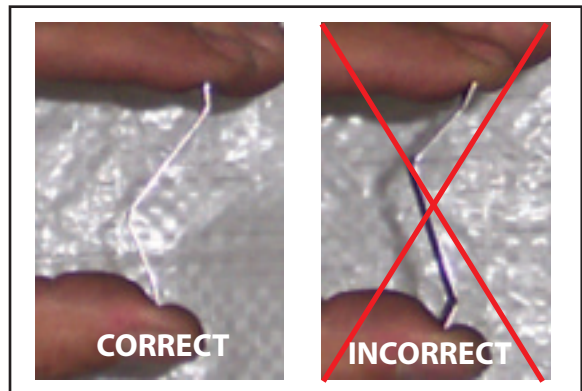


Figure 6



STEP 5:

Insert the sub assembly of step 2 in the gap and clip the standard part to the downstream part. If the sub assembly is too long, the adjustable inner wall can be cut.

See Figure 7

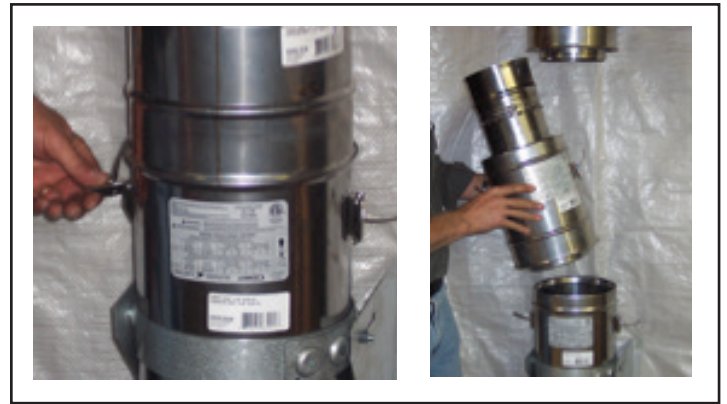


Figure 7

STEP 6:

Move up the adjustable inner wall until the female end is completely over the male end of the upstream part.

See Figure 8



Figure 8

STEP 7:

This is a critical step to allow thermal expansion. You must draw a line on the adjustable length inner wall that is 1/4" higher than the edge of the standard part female end. Then, slide down the adjustable inner wall until the line is flush with the edge. By doing this, there will be no stress applied on the caulking joint.

See Figure 9

After step 7, you will have 1/4" gap for thermal expansion at this location.

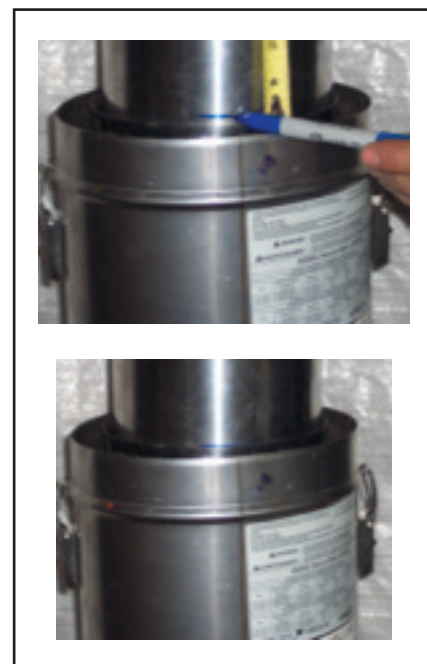


Figure 9

STEP 8:

Apply a 1/8" to 1/4" bead (may vary) of Viton caulking to fill the gap between the adjustable length inner wall and the female end of the standard part. Please allow 24 - 36 hours for Viton to cure.

See Figure 10



Figure 10

STEP 9:

Loosen the inner collar (multi-tooth clamp) and slide it down over the standard part female end. Make sure all the teeth are over the edge. Tighten the inner collar.

See Figure 11



Figure 11

STEP 10:

Measure the distance between the rolled edge of the upstream part and the upper bead of the standard part. Transpose this distance to the adjustable outer wall, measure from the upper edge of the bracket to the bottom edge. You may cut the bottom end as needed.

See Figure 12

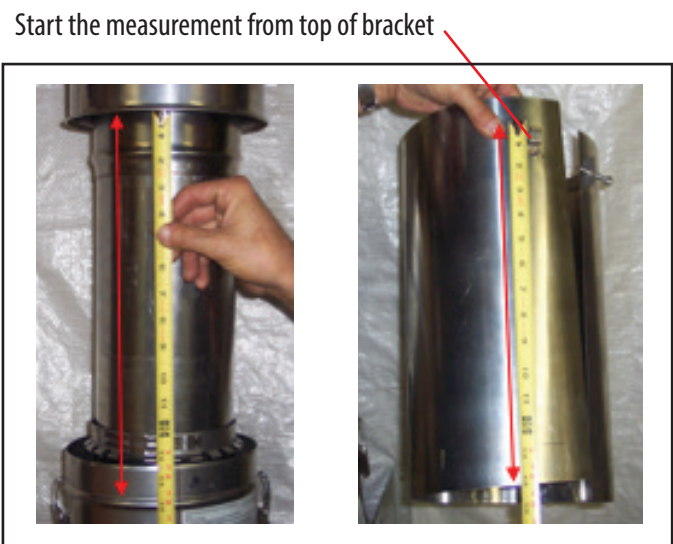


Figure 12

The tip of the screw needs to be inside the bracket.

STEP 11:

Wrap around the adjustable length outer wall and insert the upper end inside the outer wall the upstream part. Make sure the screw is inside the bracket. Do not tighten the screw at this time or you will have difficulty doing the next step.

See Figure 13



Figure 13

STEP 12:

Install the outer collar over the adjustable outer wall. Place it near the bead of the standard part. Tighten the collar.

See Figure 14



Figure 14

STEP 13:

Tighten the screw until the adjustable outer wall mate correctly with the inside of the outer wall upstream part.

See Figure 15



Figure 15

