

# Tubinox®

Superior Strength Stainless Steel Liner



[www.securitychimneys.com](http://www.securitychimneys.com)  
800-361-4909 (US) 800-667-3387 (Canada)

# Tubinox®

## APPLICATIONS

The TUBINOX stainless steel liner is designed for installation in a masonry chimney:

- when the clay liner of an existing chimney is damaged
- to improve the chimney's draft
- as a substitute of the clay liner in a new masonry chimney

It can be used to vent solid, liquid or gas-fuel fired appliances (coal, wood, oil, etc).

## FOR YOUR SAFETY

Time and wear can crack clay liners. Under these conditions, your liner can quickly become a nest for creosote deposits. Should this be the case with your masonry chimney, it would be wise, for safety reasons, to consider the advantages of a TUBINOX stainless steel liner.

The accumulation of creosote inside a chimney can become dangerous. As it is inflammable, creosote is the cause of chimney fires which can spread to become a real danger. The stainless steel liner impedes the adhesion of creosote.

## FOR GREAT PERFORMANCE

Controlled-combustion stoves are designed accordingly to highly efficient heat transfer and combustion technologies. Their rate of performance increases when they are installed with a chimney of suitable diameter. Clay liners are often too large. Consequently, they remain too cold and do not allow gas to be completely consumed, a situation which leads to gas condensation, thus formation of creosote.

## ADDITIONAL BENEFITS

- Inexpensive compared to the cost of replacing a damaged masonry chimney. Can be installed in a matter of hours.
- Substitutes the clay liner in a new masonry chimney.
- Improves the chimney's draft
- Stainless steel, type 304
- All components in the TUBINOX system are made of stainless steel
- Certified to standards: UL-1777, ULC-S635M and ULC-S640M at 2100°F (1150°C).

# SECURITY CHIMNEYS TUBINOX STAINLESS STEEL LINER

## Twist-lock System

Tubinox can be installed simply and easily, thanks to its unique twist-lock system. Just slip the components together and twist 1/8th of a turn.

## Dripless Connection

Keeps creosote and condensation inside the liner.

## Greater Resistance To Corrosion and Deformation

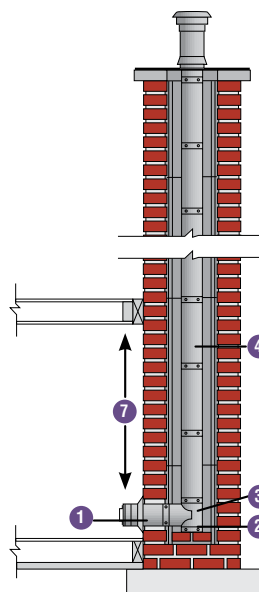
Manufactured with 304 type stainless steel renowned for its resistance to corrosion. Double-lock seam provides superior strength and prevents deformation.

## Lifetime Limited Warranty

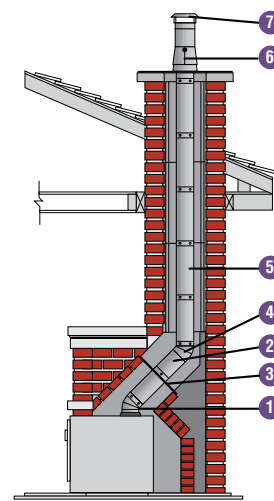
Tubinox liner is covered by a Lifetime Limited Warranty. See your dealer for complete details.

## Installations

### Straight Installation



### Offset Installation



#### Straight Installation

- 1 Masonry Adaptor (LMA)
- 2 Tee Cap (TCS)
- 3 Split Base Tee (LT)
- 4 Length (L)
- 5 Flashing (LST)
- 6 Deluxe Rain Cap (LCC)
- 7 Minimum Clearance 18"

#### Offset Installation

- 1 Elbow (LE45/LE90)
- 2 Adjustable Length (L7A)
- 3 Interior Support (LSB)
- 4 Elbow (LE45/LE90)
- 5 Length (LL)
- 6 Support Assembly (LSA)
- 7 Regular Rain Cap (LCS)

# General Parts

## Lengths (LL)

Five standard lengths of 6, 12, 24, 36 and 48 inches are available. They can be assembled easily to construct a chimney liner of the required height. Available in 5", 6", 7" and 8" I.D.



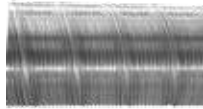
## Adjustable Length (L7A)

Adjustable length makes it possible to adjust the liner to the required height. Telescoping from 7 to 11 inches (17.7 to 27.9 cm).



## Flexible Length (LLFlex)

Used for offsets where it is difficult to install rigid liner elbows. Made of 304 type stainless steel. The flexible length must be attached to male and female adaptors. (Adaptors sold separately).



## Adaptor for Flexible Pipe (LAAM/LAAF)

Used to connect flexible lengths to rigid parts. (Sold separately).



## Split Base Tee (LT)

As the width of a masonry chimney is often restricted to a minimum, our split base tee features a removable snout. The snout is fastened to the other section of the tee from the inside of the flue. The tee cap is not included. (TCS or LTC)



## Regular or Twist-Lock Tee Cap (TCS/LTC)

Used under the tee allowing the inspection and cleaning of the installation. Available in two versions: a regular cap screwed to the bottom of the tee. Or a twistlock cap featuring a longer flue and a handle to facilitate access.



## Elbows (LE30/LE45/LE90)

Used to offset the liner. Available in 30°, 45°, and 90°.



## Reducer and Inceaser Lengths (LLR/LLW)

Required to adapt the liner to smaller or larger flue diameters.



## Masonry Adaptor (LMA)

Designed for use at the indoor exit of the masonry chimney, it comes complete with decorative collar and connects with the stove pipe.



## Insulated Wall Radiation Shield (LRSMI)

Designed to cross a combustible wall adjacent to a masonry chimney. The wall radiation shield must be adjusted to the wall of the masonry. This shield can be adjusted from 6 to 12 inches. Available in 6" and 7".



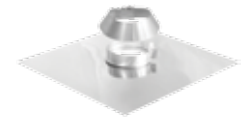
## Flashing (LST)

Its ingenious design allows for thermal expansion.



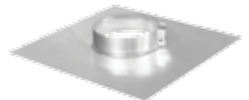
## Support Assembly (LSA)

Used to support the liner from the chimney allowing space for thermal expansion. Made of stainless steel (type 304); it includes a support collar locking around the flue, and a storm collar to ensure a watertight seal.



## Interior Support (LSB)

Supports the liner from the inside installations with deviation and includes a support collar locking around the flue.



## Rain Cap (LCC/LCS)

An essential finishing part, its efficient design minimizes the introduction of snow or rain without reducing the required draft.



[www.securitychimneys.com](http://www.securitychimneys.com)

**Security Chimneys**

2125 Monterey, Laval, Quebec  
Canada, H7L 3T6

450-973-9999  
800-361-4909 (US)  
800-667-3387 (Canada)  
450-973-2222 (Fax)

Need product information or technical support? Our customer service specialists are ready to answer your questions:

800-667-3387 or contact  
[infoeng@securitychimneys.com](mailto:infoeng@securitychimneys.com)

ETUBINOX



[www.securitychimneys.com](http://www.securitychimneys.com) 800-361-4909 (US) 800-667-3387 (Canada)

Member of M&G Group Security Chimneys International © 2014  
Information published in all Security Chimneys literature is current at time of publication and is subject to change without notice.